

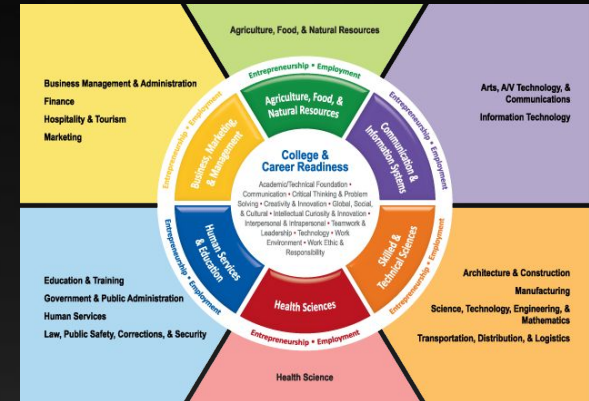
REGISTRATION

2021-2022



Rolling Meadows High School

Course Selection TIMELINE



- ❑ **October 29 - 30** Teacher Recommendation Days (Core courses and levels are determined by your current teachers)
- ❑ **October 30-December 21** (PowerPoint presentations w/ videos embedded during seminar-See next slide for exact level dates)
- ❑ **December:** Verifiers are mailed home
- ❑ **January 13-19** Teacher recommendations are re-confirmed
- ❑ **January 21** All students sign off on verifiers
- ❑ **January 23-29** Students/Parents contact counselor/div heads with schedule or level change/concerns
- ❑ **January 29 @ 3 p.m. LAST DAY TO CHANGE YOUR MIND.**
- ❑ **FEBRUARY:** If any courses are closed due to low enrollment, your alternates are placed on your schedule.

Freshmen

Pre-Registration Presentation PPT- October 30th
(Shared in Seminar)

Nov. 2-11: During your Biology class you will work with your counselor to pick your electives schedule. (Please pick 2-3 alternate electives in case a class doesn't run or will not fit in your schedule)

Sophomores

Pre-Registration Presentation PPT- November 12th
(Shared in Seminar)

Nov. 16-30: During your English class you will work with your counselor to pick your electives schedule. (Please pick 2-3 alternate electives in case a class doesn't run or will not fit in your schedule)

Juniors

Pre-Registration Presentation PPT- December 1st
(Shared in Seminar)

Dec. 2-11: During your U.S. History class you will work with your counselor to pick your electives schedule. (Please pick 2-3 alternate electives in case a class doesn't run or will not fit in your schedule)

ONLY CHOOSE ELECTIVES

GOLD DAY EXAMPLE

*MATH

*ENGLISH

*SOCIAL SCIENCE

ELECTIVE

PURPLE DAY EXAMPLE

*SCIENCE

SEMINAR

P.E. OR P.E. ELECTIVE

ELECTIVE

**CORE COURSES AND LEVELS WILL BE CHOSEN FOR YOU*

Division Heads

MS. GRETA RAKOW

Social Studies/
World Language

MS. BRENDA MARTIN

Special Education

Ms. JOANIE GALLAGHER

Math/Science

MR. DAVE WIETRZAK

Career and Technical
Education, PE/ Driver's Ed.

MS. MARY LUCKRITZ

English/ELL/Fine Arts

MR. JONATHAN WEINTRAUB

& MR. ALVIN LEWIS

Health

MS. LISA DAROCHA

Music